

F/W Fabric Collections

By JOLON Textile/ CHIFENG WOOL Dec, 2025

Email: abby@jolontex.com, ken@jolontex.com

WeChat: 13961690325 (Ken)

Call Us: + 86-13961690325

Website: www.jolontex.com

Who We Are

Jolon Textile is supplier of **Fall & Winter Fabric in OEM&ODM**, from spinning, weaving, dyeing, finishing to businesses all over the world.

Our Specialty

Jolon Textile has been focusing on **Fall & Winter Fabrics** for more than 20 years, mainly manufactures high-quality **woolen fabrics** of a various range in the way of **customizability / fast delivery/ low MOQ** .

Our Products

Fleece, Melton, Flannel, Velour, Fancy wool, Tweed, Tartan, Serge, Stripes, wool blend fabrics, double- face brush fabrics, which are normally used for **overcoats, blazer, jackets, skirt, suits.....**

Our Customers



WOOL

SUSTAINABLE MATERIAL



SPINNING



WEAVING



DYEING



FINISHING

Sustainability

Eco-friendly production system, and has been certified.

Use sustainable raw material, reactive dyeing, even Eco-Packaging...

Achieving test standards of ISO, GB, ASTM, AATCC, EN, JIN....



Scope Certificate

Scope Certificate Number ITS-TE-00003173-GRS-03497800
Scope Certificate Version Number ITS-TE-00003173-GRS-03497800

Intertek
certifies that

SHANGHAI JOLON INTERNATIONAL TRADING CO., LTD

Textile Exchange-ID (TE-ID): TE-00003173
License Number: TE-00003173
RM201-77, 2nd floor of No.402 North Fute Road,China (Shanghai) Pilot Free Trade Zone
Shanghai,200131
Shanghai Shi, China

has been audited and found to be in conformity with the
GLOBAL RECYCLED STANDARD 4.0 (GRS 4.0)

Product categories mentioned below (and further specified in the product appendix) conform with the standard(s):
Dyed fabrics (PC0025)
Process categories carried out under responsibility of the above mentioned organization for the certified products cover:
Trading (PR0030)
*The processes marked with an asterisk may be carried out by subcontractors

This certificate is valid until: 2026-11-05
Audit criteria:

Place and Date of Issue
Kentwood, Michigan, USA, 2025-11-06
Last Updated: 2025-11-06
Extended Until:
Status: Valid

Rathin Grover

Rathin Grover
President, Business Assurance



Certification Body Licensed by: Textile Exchange; Licensing Code: CB-TS
Certification Body Accredited by: ANAB; Accreditation Number: 0004
Inspection Body: Intertek Testing Services Ltd, Shanghai
Auditor(s): N/A

This scope certificate provides no proof that any goods delivered by its holder are GRS certified. Proof of GRS certification of goods delivered is provided by a valid transaction certificate (TC) or equivalent covering them.
The issuing body may withdraw this certificate before it expires if the declared conformity is no longer guaranteed.
To authenticate this certificate, please visit: www.TextileExchange.org/Certificates



This electronically issued document is the valid original version
TE-ID: TE-00003173



Scope Certificate

Scope Certificate Number ITS-TE-00003173-RAF-00030300
Scope Certificate Version Number ITS-TE-00003173-RAF-00030300

Intertek
certifies that

SHANGHAI JOLON INTERNATIONAL TRADING CO., LTD

Textile Exchange-ID (TE-ID): TE-00003173
License Number: TE-00003173
RM201-77, 2nd floor of No.402 North Fute Road,
Shanghai Pilot Free Trade Zone, 200131,
China

has been audited and found to be in conformity with the
**RESPONSIBLE ANIMAL FIBER (RAF) covering
Responsible Wool Standard (RWS) 2.2**

Product categories mentioned below (and further specified in the product appendix) conform with the standard(s):
Dyed fabrics (PC0025)
Process categories carried out under responsibility of the above mentioned organization for the certified products cover:
Trading (PR0030)
*The processes marked with an asterisk may be carried out by subcontractors

This certificate is valid until: 2025-07-08
Audit criteria:

Place and Date of Issue
Lowell, MA, USA, 2024-07-09
Last Updated: 2024-07-09
Extended Until:
Status: Valid

Galina Moldoveanu

Galina Moldoveanu
President, Business Assurance



Certification Body Licensed by: Textile Exchange; Licensing Code: CB-TS
Certification Body Accredited by: ANAB; Accreditation Number: 0208
Inspection Body: Intertek Testing Services Ltd, Shanghai
Auditor(s): N/A

This scope certificate provides no proof that any goods delivered by its holder are RWS certified. Proof of RWS certification of goods delivered is provided by a valid transaction certificate (TC) or equivalent covering them.
The issuing body may withdraw this certificate before it expires if the declared conformity is no longer guaranteed.
To authenticate this certificate, please visit: www.TextileExchange.org/Certificates



This electronically issued document is the valid original version
TE-ID: TE-00003173



Top sales of Wool Fabric

- **WOOL FEECE FABRIC -**

- Art No: CF-50477 50%WOOL 50% OTHERS 475GSM 150CM Over 30 Colors Hot in USA (**greige avail & Running stocks**)

- Art No: CF-50508 50%WOOL 50% OTHERS 500GSM 150CM Over 30 Colors Hot in USA (**greige avail & fast delivery**)

- Art No: CF-50609 50%WOOL 50% OTHERS 600GSM 150CM Over 30 Colors Hot in korea (**Double face & greige avail**)

- **WOOL MELTON FABRIC -**

- Art No: CF-50502 50%WOOL 50% OTHERS 500GSM 150CM Over 30C olors Hot in UK (**Clear structur & greige avail**)

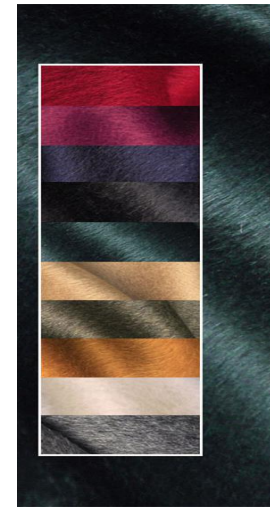
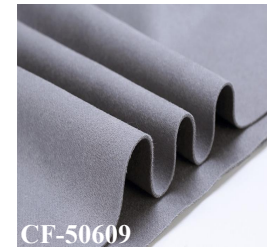
- Art No: CF-50283 50%WOOL 50% OTHERS 280GSM 150CM Over 20 Colors Hot in USD (**greige avail & Running stocks**)

- **WOOL SUIT FABRIC -**

- Art No: CF-WR10028 **100%Wool** 185GSM 150CM Over 100 Colors/Patterns Hot in USA (**Running stock**)

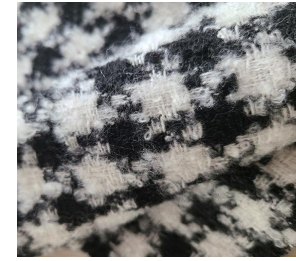
Art No: CF-W50231 50%WOOL25%VISCOSE 25%POLY 220GSM 150CM Over 60 Colors/Patterns Hot in USA (**Running stock**)

Art No: CF-W50181 50%WOOL50%POLY 185GSM 150CM Over 60 Colors/Patterns Hot in USA (**Running stock**)



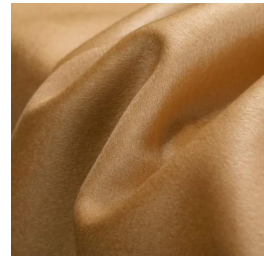
CUSTOMIZE - DOUBLE FACE WOOLEN &

WOOL BLENDS & PLAIDS & TWEEDS



JACQUARDS

- Timeless, classic, countless patterns in herringbones, twill houndstooth, grids and plaids....
- Customizable in different composition with sustainable material, weight, color sets.



**Waiting for
your
designs ...**



- **Q: Where do your company and factory locate?**

A: Jolon Textile is operated from the Mainland China. Our factory Chifeng, locates in Jiangyin city, Jiangsu, 1.5 hours northwest to Shanghai.

- **Q: How could I get the fabric sample?**

A: Hanger or A4 size cuttings are free, with express cost collect. Yardage sample will be returned when bulk order placed.

- **Q: What is your MOQ? Do you accept small orders?**

A: Regular Minimum Order Quantity is 500-1,000 yards. We also accept small orders below MOQ with 15% surcharge. Anyway, you may order any quantity for some of our running items, without any surcharge.

- **Q: How about your delivery? Will it be long time?**

A: With our own dyeing and finishing, we could delivery your orders within 7 -10 days if greige available, and 30-40 days for customized items. Lab/dips & handlooms will be achieved in 3-7

- **Q: How about your main market?**

- A: We serve the world with the best of fabric solutions, mainly for European, American & korea market

JOLON

TEXTILE

Contact us

Email: abby@jolontex.com, ken@jolontex.com
WeChat: 13961690325 (Ken)
Call Us: + 86-13961690325
Website: www.jolontextile.com

Jolon Textile is a brand that is completely customer oriented and dedicated to provide the best service to all our clients, around the clock, all day everyday. Our talented team of professionals is awaiting your inquiries to provide you the best support of the professional grade and the highest friendliness along with all the information you need and assisting you throughout your order with us.

Thanks

By JOLON / CHIFENG WOOL Dec, 2023

Email: abby@jolontex.com, ken@jolontex.com

WeChat: 13961690325 (Ken)

Call Us: + 86-13961690325

Website: www.jolontextile.com